

WELCOME & TRANSFORMING CARE IN THE TIME OF COVID

HEATHER & LYNDA'S EXPERIENCE

SARITA MOHANTY, MD
CEO/PRES

WELCOME
TO WEEK 3!

* PREVIOUS
EVENTS ARE
AVAILABLE
ON OUR SITE

WK1
L1%

WK 2

BEST PRACTICES
FOR COMPLEX
CARE NEEDS

WK3

MEDICARE &
MEDICAID
FLEXIBILITY



WHICH COVID-19
FLEXIBILITIES
SHOULD
BECOME
PERMANENT?

OUR HOME-BASED
CARE PROGRAM IS
BUILT AROUND
THE PATIENT.

HOME-BASED
CARE IS A
MULTI-DISCIPLINARY
APPROACH

- MDs
- NPs
- COMPLEX
CARE MGRs
- SOCIAL WORKERS



BETWEEN MY
FAITH, FAMILY,
& SCRIPPS
I KNOW THAT'S
WHY I'M HERE.



THE HOME BASED
CARE TEAM HELPED
ME A LOT

O2 TANKS

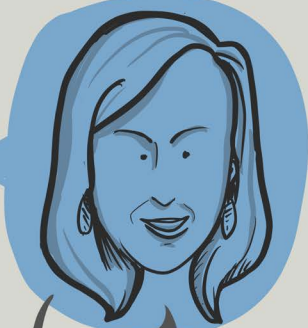
LOVING
CARE

PEOPLE
RISKED THEIR
LINES CARING
FOR ME

ASSISTED
THE CARE-
GIVER TOO

CLINICIANST
STAFF

TEAM-BASED
APPROACH



COVID WAS THE 1ST
TIME I COULDN'T BE
BY MY MOM'S SIDE

TRANSFORMING MEDICARE & MEDICAID BEYOND COVID-19 FOR A PERSON-CENTERED FUTURE — PANEL DISCUSSION

SARAH DASH, ALLIANCE FOR HEALTH POLICY — Moderator | STEPHANIE ANTHONY, MANATT HEALTH STRATEGIES | JENNIFER PODULKA, HEALTH MGMT. ASSOCIATES | GABRIEL AYERZA, COMMUNITY HEALTH PLAN OF WASHINGTON | DR. EVAN OAKES, HEALTHPOINT

WHICH PUBLIC HEALTH EMERGENCY FLEXIBILITIES SHOULD WE KEEP?

REMOTE SERVICE & TELE-HEALTH EXPANSION Medicare

- EXPAND TELEHEALTH BEYOND JUST RURAL
- ALLOW AUDIO-ONLY SERVICES ALL BENEFICIARIES

• ALLOWING DOCS TO PRACTICE X-STATE LINES
 - A BIG HELP TO BEHAVIORAL HEALTH!

STABILIZE the WORKFORCE!

- ALLOW NON-LICENSED STAFF TO DO SOME CLINICAL TASKS
- NPPs
- CRNAs

Medicaid
 PAY FAMILY TO PROVIDE HEALTHCARE

- EXPAND LTSS SUPPORT
- TECH ACCESS / TRAINING
- ACCESS TO TELE-HEALTH / REMOTE
- ADDITIONAL CARE SETTING DELIVERY

IT'S OUR DUTY TO REDUCE COGNITIVE LOAD
 ↓ BUREAUCRACY

THANKS NEW BEGINNINGS!

TELE-HEALTH CAN BENEFIT ALL!

- PROVIDER - FREES CLINIC SPACE
- PATIENTS - @HOME CARE
- FAMILY CARE-GIVERS - FLEXIBILITY

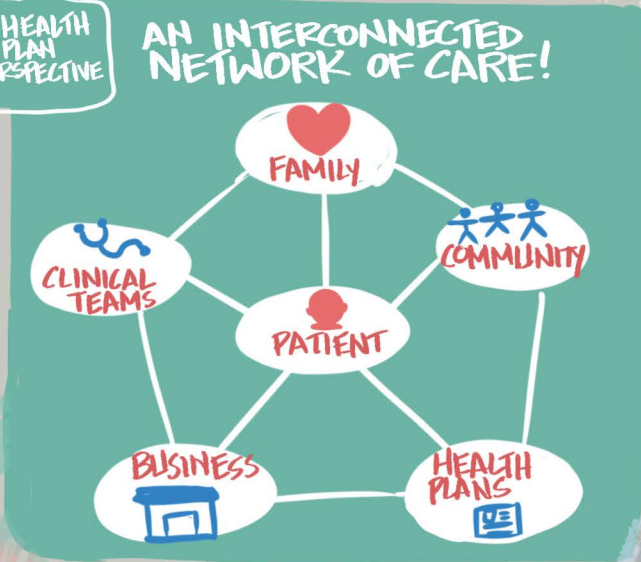
SUSTAINABILITY REQUIRES INCOME!

↑ MONEY BUT NOT... ↓ RULES
 INCREASES INEQUITY!

EXPANDING REMOTE SERVICES TO INCL. URBAN SETTINGS A MATTER OF LIFE & DEATH!

- ADDRESS SOCIAL DETERMINANTS
- MAIL SVCS
- FOOD DELIVERIES

HEALTH PLAN PERSPECTIVE



IT'S NO LONGER OFFERED?

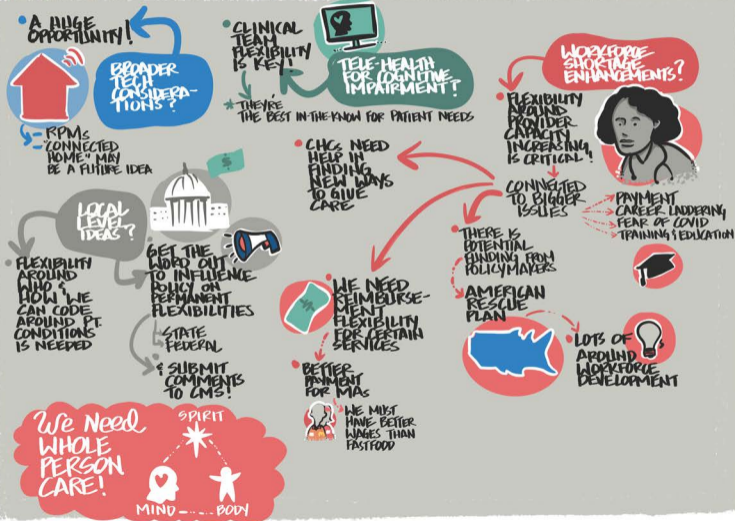
COVERAGE FOR KEEPERS MUST BE SEAMLESS!

Q&A THOUGHTS

- TELEHEALTH IS RIGHT-SIZING
- ALIGNMENT W/ MEDICARE & MEDICAID
- CHANGES WILL AUTO-END UNLESS MODIFIED
- POTENTIAL DISCONNECTS DUE TO STATE REQS
- ID'ING WHICH FLEXIBILITIES TO KEEP IS DIFFICULT!
 → THANKFUL FOR SCAN'S RESEARCH FUNDING!
- DON'T DEEM FAILURES TOO SOON
- PTs, PROVIDERS, & COMMUNITY SHOULD DETERMINE SUCCESS

TRANSFORMING MEDICARE & MEDICAID BEYOND COVID-19 FOR A PERSON-CENTERED FUTURE — LIVE Q&A | KEYNOTE: SEN. BOB CASEY

SARAH DASH, ALLIANCE FOR HEALTH POLICY - Moderator | STEPHANIE ANTHONY, MANATT HEALTH STRATEGIES | JENNIFER PODULKA, HEALTH MGMT ASSOCIATES | GABRIEL AYERZA, COMMUNITY HEALTH PLAN OF WASHINGTON | DR. EVAN OAKES, HEALTHPOINT



KEYNOTE: SENATOR BOB CASEY



THANK YOU SCAN FOUNDATION FOR INVITING ME. GOD BLESS YOUR WORK FOR OLDER ADULTS & PEOPLE W/ DISABILITIES.

WITH REP DEBBIE DINGELL WE'RE INTRODUCING THE,

BETTER CARE - BETTER JOBS ACT!

- BETTER CARE FOR SENIORS & PEOPLE W/ DISABILITIES**
- BETTER JOBS FOR CARE WORKERS**
 - HELPS ↑ PAY AND AFFECTS MOSTLY - WOMEN - WOMEN OF COLOR
- SUPPORT FOR FAMILY CARE-GIVERS**

LET'S MEET THE DEMANDS OF LSS!

THE PACE PROGRAM NEEDS STRENGTHENING - IT IS AN ALL-INCLUSIVE SENIOR PROGRAM